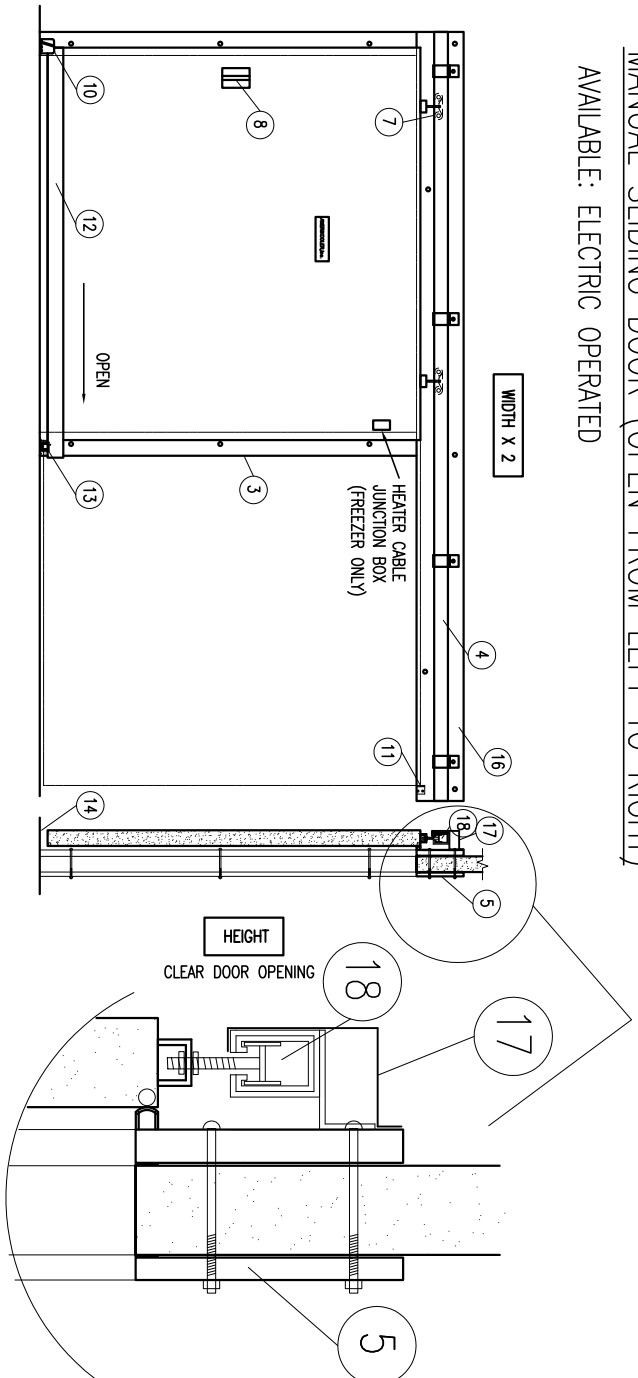


MANUAL SLIDING DOOR (OPEN FROM LEFT TO RIGHT)  
 AVAILABLE: ELECTRIC OPERATED



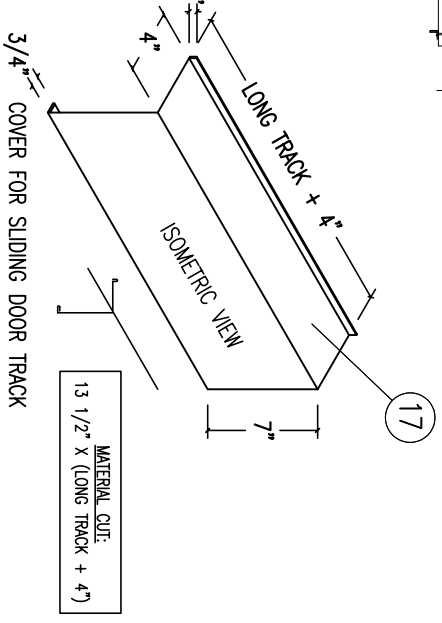
**4" INSULATION:**  
**AK-XPS4™**  
**HI-PERFORMANCE**  
**PANEL CORE**  
**COOLERS R-29**  
**FREEZERS R-32**

- STANDARD FEATURES:**
- 1- 4" INSULATION: AK-XPS4 HI-PERFORMANCE PANEL CORE.
  - 2- ACRYLIC COATED GALVALUME METAL FINISH IN & OUT
  - 3- OUTSIDE CASING OF 1 5/8" X 12" METAL CLAD WITH BUBBLE NEOPRENE GASKET ON 3 SIDES
  - 4- ASSEMBLED WITH HEAVY DUTY TRACK, ADJUSTABLE IN-OUT, UP-DOWN.
  - 5- INSIDE CASING OF 1 5/8" X 12" METAL CLAD TOP, & 6" SIDES
  - 6- HEATER CABLE 110 VOLT WITH J. BOX ON FREEZER DOORS
  - 7- TWO, 4-WHEEL BEARING TROLLEYS ON FREEZER DOORS
  - 8- OUTSIDE CHROME-PLATED 8 1/4" PULL HANDLE
  - 9- INSIDE RECESSED PULL HANDLE
  - 10- FRONT DIE CAST DOOR STOP
  - 11- REAR DOOR STOP BUMPER
  - 12- TRAILER ALUMINUM EDGE 4" HIGH WITH 3" WEDGE
  - 13- REAR FLOOR GUIDE ROLLER
  - 14- DOUBLE NEOPRENE BOTTOM SWEEP GASKET
  - 15- 4" PVC CHANNEL FOR 4" WALL OR 1" X WALL THICKNESS METAL CHANNEL FOR WIDER WALLS.
  - 16- COMPLETED ASSEMBLED TRACK SYSTEM FOR EACH INSTALLATION
  - 17- COVER FOR SLIDING DOOR TRACK
  - 18- END CAPS COVER FOR SLIDING DOOR TRACK

- EACH DOOR:**
- (6) TRACK, SWEEPS, WRAPPED WOODS AND LOOSE ACCESSORIES
  - (1) VAPOR ROOF LIGHT W/LEXAN GLOBE
  - (1) SWITCH W/COVER PLATE
  - (1) THERMOMETER W/SCREWS
  - (1) STOP BUMPER W/EXP. SCREWS
  - (1) ROLLER GUIDE
  - (11) CARRIAGE BOLTS 8" LONG, W/NUTS AND WASHERS
  - (1) FRONT DIE CAST DOOR STOP
  - (2) ENDS CAPS

**STANDARD SIZES**

WIDTH	HEIGHT
5'	X 7'
5'	X 8'
6'	X 8'
7'	X 8'
8'	X 8'
9'	X 8'
10'	X 8'



**REQUIRED INFORMATION**

COOLER     TEMPERATURE  
 FREEZER     TEMPERATURE

CLEAR DOOR OPENING IS: \_\_\_\_\_

DOOR SIZE IS: \_\_\_\_\_

HEATER CABLE  110 VOLT     220 VOLT

KICK PLATE OUTSIDE:  
 24" HIGH     48" HIGH

PLASTIC STRIP CURTAIN SIZE: \_\_\_\_\_

OTHERS: \_\_\_\_\_



**SLIDING DOOR**

SCALE: NTS	DRAWN BY:	DATE:	REV:
575 EAST 10th AVENUE, HIALEAH, FLORIDA 33010 TEL. (305)884-8384. TOLL FREE 1(800)627-5665 FAX (305)884-8330		JOB NUMBER:	

PAGE: 34 of 43



DOOR COMPANY

MANUAL VERTICAL LIFT

## EFD-VLM

The FRANK DOOR Manual Vertical Lift is used in applications where there is minimum side room or when several door openings are in close proximity, such as in warehouse loading docks. Suitable for interior and exterior walls in coolers, freezers or industrial buildings.

### Standard Features

#### Finish

- 24 gauge metal
- 040 embossed aluminum

#### No Wood Construction

#### Insulation

- Foamed in place polyurethane
- R value 8 per inch

#### Panel Mounted Dual Blade Santoprene Gasket

#### Track

- 11 gauge galvanized steel J track with 3" wheels
- Heavy duty hardware

#### Extruded Aluminum Side Casings and Header

- Extruded one piece design
- Insulated
- Increased durability
- Lower maintenance

#### Sheave Assembly

- Includes chain, sprockets and counter weights

#### Exterior Pull Handle

#### Interior Pull Handle

#### Heater System for Freezer Doors

- Perimeter heat on four sides of door panel and three sides of door frame
- Self regulating
- 120/1/60 UL Listed



LISTED  
Door Panel  
Assembly



### Options

Extruded Aluminum Back-Up Header and Casings

Other Finishes Available

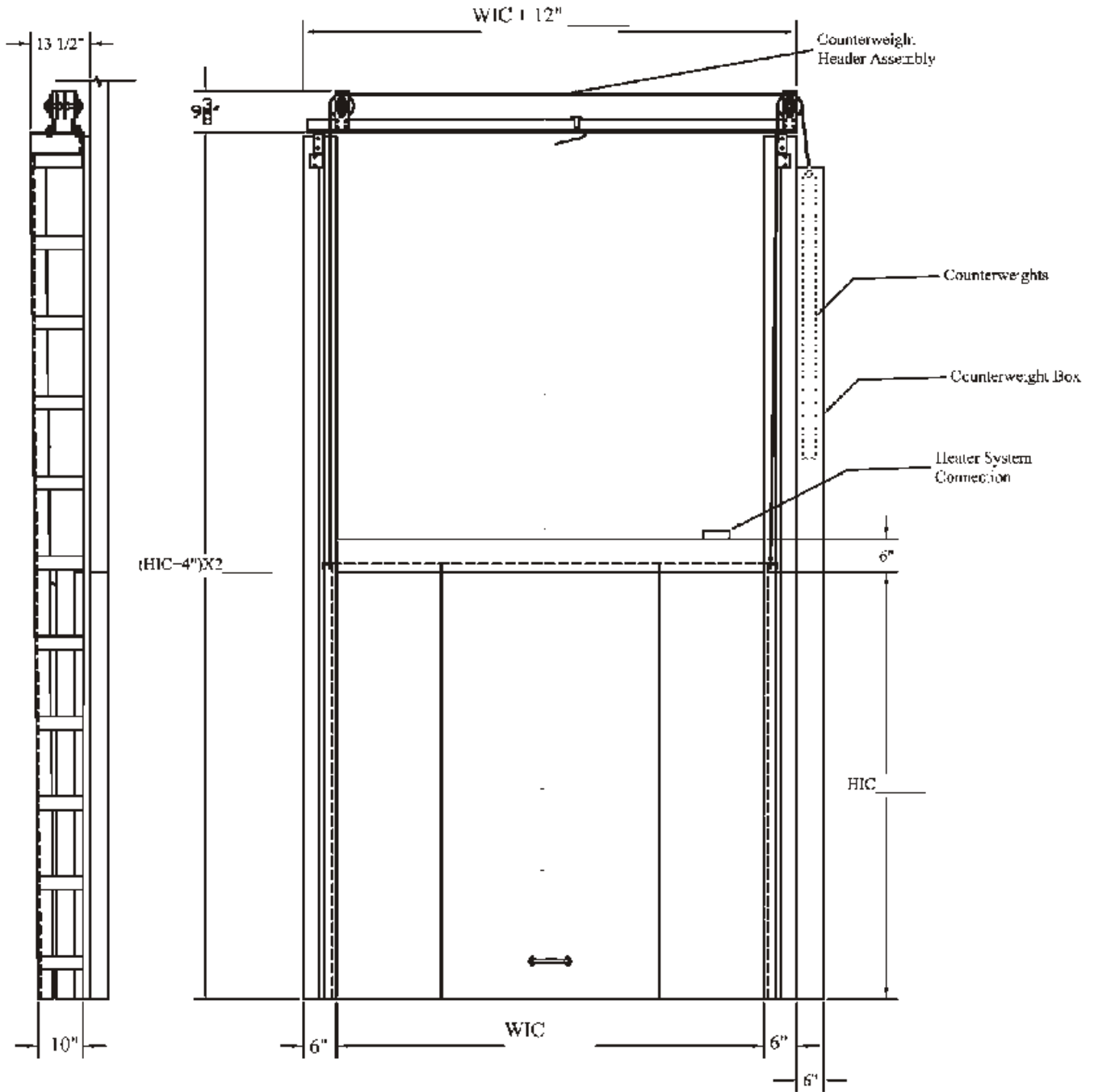
Kickplate

Lock

View Window

Wicket Door

America's "New Standard" for Cold Storage Doors



DISCLAIMER: As we are always striving to improve our products, FRANK DOOR Company reserves the right to alter specifications and design without incurring obligation.

America's "New Standard" for Cold Storage Doors

# Vertical Lift Doors

## ColdGuard Vertical Lift Doors

*The ColdGuard Vertical Lift Door is available with electric and manual operation, is ideal in applications where there is minimum side room or when several door openings are close together as with warehouse loading docks.*

*As with all ColdGuard doors, the Vertical Lift door incorporates an FRP perimeter framework creating a durable, long lasting door panel. Vertical Lift doors are available for cooler or freezer applications, are available 4" and 6" thick, and can be manual or motor operated.*

### Design Features

- Door track is smooth riding "down & in" design for a tight seal.
- Heavy duty hardware and track coated for corrosion resistance, including 3" tracks, torsion spring and two pull cord switches each with 20 feet polypropylene pull cord for electric models.
- EPDM synthetic "T" rubber seal on face of casings. Track mounted neoprene rubber low temperature cloth reinforced gasket on bottom edge of door.
- Freezer doors are equipped with 115 volt perimeter heat cables.
- Torsion spring counter balance system.
- Manual or electric operation.
- Door panel is 4" thick and has an R Value of 28.
- All doors are custom manufactured to your exact requirements. Standard door sizes range from 84" wide x 144" high, but larger and smaller doors are not a problem.
- Every door completely tested before shipping.



### ColdGuard Vertical Lift Options

- Stainless Steel 24 gauge, type 304-3B with polished finish, embossed white aluminum, embossed mill aluminum, smooth white aluminum, smooth white galvanized, and smooth galvalume
- Heated or non-heated vision window panel
- Backup mirror image casings
- Modified vertical lift design
- Chain hoist
- Jamb wall caps
- Aluminum diamond tread kick plate
- 18 gauge satin finish stainless kickplate
- Custom sizes available
- Vertical lift power operators

### Power Operator

- Totally enclosed, fan cooled, 3/4 HP, jackshaft electric operator
- Photo-eye beams mounted near floor level on door casing, stops and reverses door to fully open position if any obstruction is sensed while closing
- Includes 2 pull cords (1 heated in freezer applications)
- Thru-beam photo cell prevents door from closing during use
- Standard operating speed is 10" per second

